



The Maldens and Coombe Heritage Society

(Founded 2012)

WHERE'S THE PARTY?

Julian McCarthy

By now you will have gathered that I like solving riddles and puzzles for which I blame (but also thank) my parents and their asking "when is a door not a door?" and "what walks on four legs, two legs and three legs?" For many, the answer is "who cares!" and they go about their daily lives, but for others (with curious and inquisitive staff in the brain office), the phrase 'who cares' is not an option.

You will understand therefore that when I saw this image I had to investigate and find out where it was.



The little detective in the knowledge office of my head leapt into action and called the lady (a part-time teacher) who works (and occasionally teaches) in the eye department. "Hi, is that Iris? It is? Great! Look, Iris, we need you to focus the lenses on this image and see if you (or any of your pupils) can zoom in on the building details at the top! What's that? ...Yes, I *know* you need assistance focussing as the equipment is no longer working as well as it did! I'll call the arm and hand department and we shall get some extra lenses (from Boots the Opticians) lifted into place for you!"

A short while later Iris called back and reported that having focussed the lenses, the buildings at the top appears to be an institutional style of construction on the right, residences on the top left and, picking up subtle clues like the kerb stones behind the wheels of the pram at the bottom of the picture, the conjecture formed is that this is a picture of a road junction with a public building on the corner and with residences further down the side road.

A quick internal phone call to the memory office "Hi, can I speak with Ray please? Yes, that's correct, Ray Call! (awful pun!) Ray, what do you remember about an institutional building on the corner of a residential road in New Malden?"

The Maldens and Coombe Heritage Society, 135C South Lane, New Malden. KT3 5HQ
Telephone: 020 8949 3157 Email: maldensandcoombehs@gmail.com

Ray suggests that it *might* be the old Wesleyan chapel on the corner of Cambridge Road. But he needs to check with another Ray (Mr Chive, pronounced with a hard K sounding Ch!) who, to avoid confusion, is called R. (as in R. Chive). Despite the harshness of his name he will help as he does know his onions!).

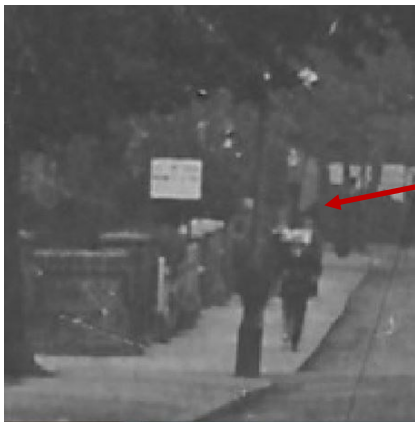
R Chive (*this is all in my head remember!*) and Ray Call each advise that there are other views and they may help. They call Iris. "We are going to look the other way, Iris!" Iris reassures them that she and they are not doing anything illegal reproducing photos but they correct her. "No Iris, we mean we are going to *look the other way* – down the street - at a view of Cambridge Road toward the High Street!"



"Ok, Iris, now focus in at the far end!" ...Iris focusses in!



"Ah ha, can you see those white – topped pillars on the left? They look a lot like the pillars in the top left hand corner of the original photo!"



Are these pillars the same ?

So, back to Ray Call and R. Chive to see if there are any images available of the building on the corner of Cambridge Road. The only one I have is from Margaret Bellars's Book and it is inconclusive. Sure enough there are buttresses there but the window I need to prove it was there and solve the riddle is not there!!!

Buttresses and two windows – seems promising -but the **window at the end** is a problem!

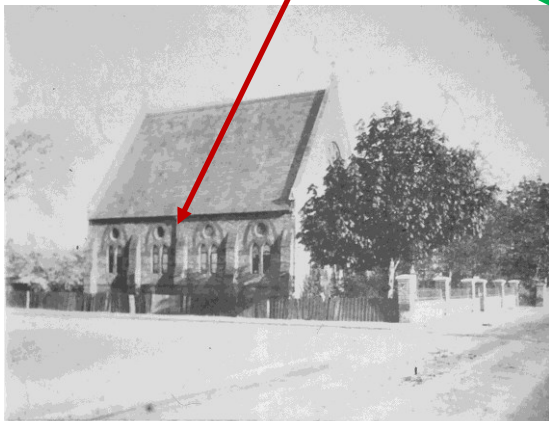
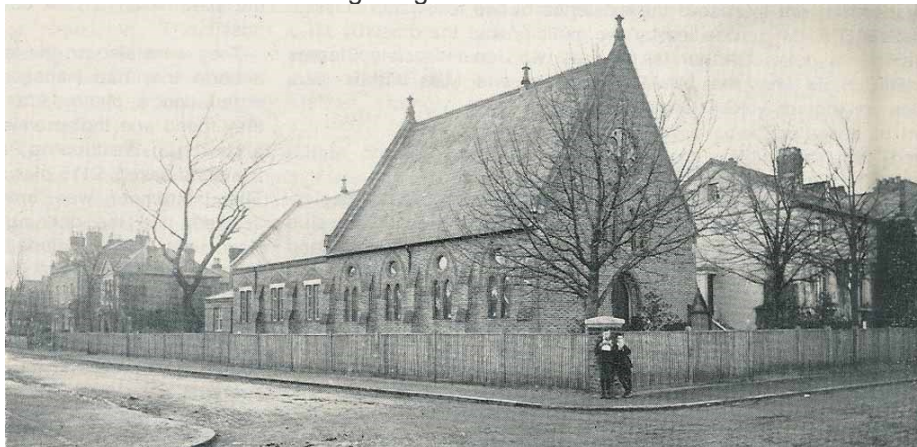


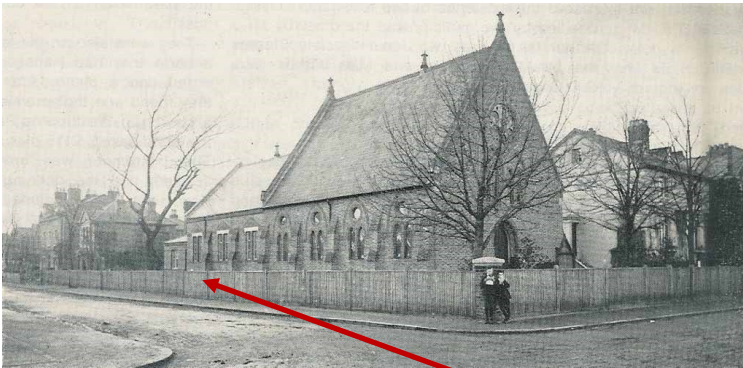
Fig. 19 The Wesleyan Chapel, main road Malden, built 1868.



At this point I need to ask for help and this is where you (the reader and, hopefully, Member of the Society) can help me close such pieces of investigation. In this instance I am very grateful to Pam Vincent who picked up on my request and forwarded the following image.



As you can see it now all falls into place. The window I was looking for was (as Pam advises) is actually part of the Sunday School Hall and then the buttresses are part of the Chapel wall.



Buttresses and two windows and window at the end all now coincide.



So, with modern digital technology and thanks to a son who knows how to manipulate images, we get close (with slight perspective inaccuracies) to 'as it was on the day', and the little men in my head are for now, content as another mini Sunday afternoon puzzle has been solved!





(Thanks again to Pam, Alan and Lyall)

The Maldens and Coombe Heritage Society, 135C South Lane, New Malden. KT3 5HQ
Telephone: 020 8949 3157 Email: maldensandcoombehs@gmail.com